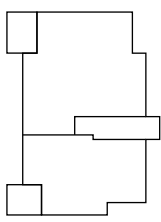
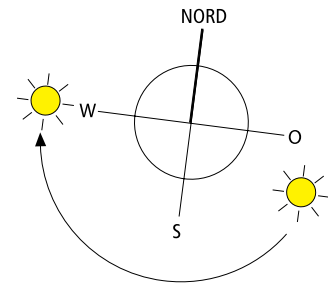
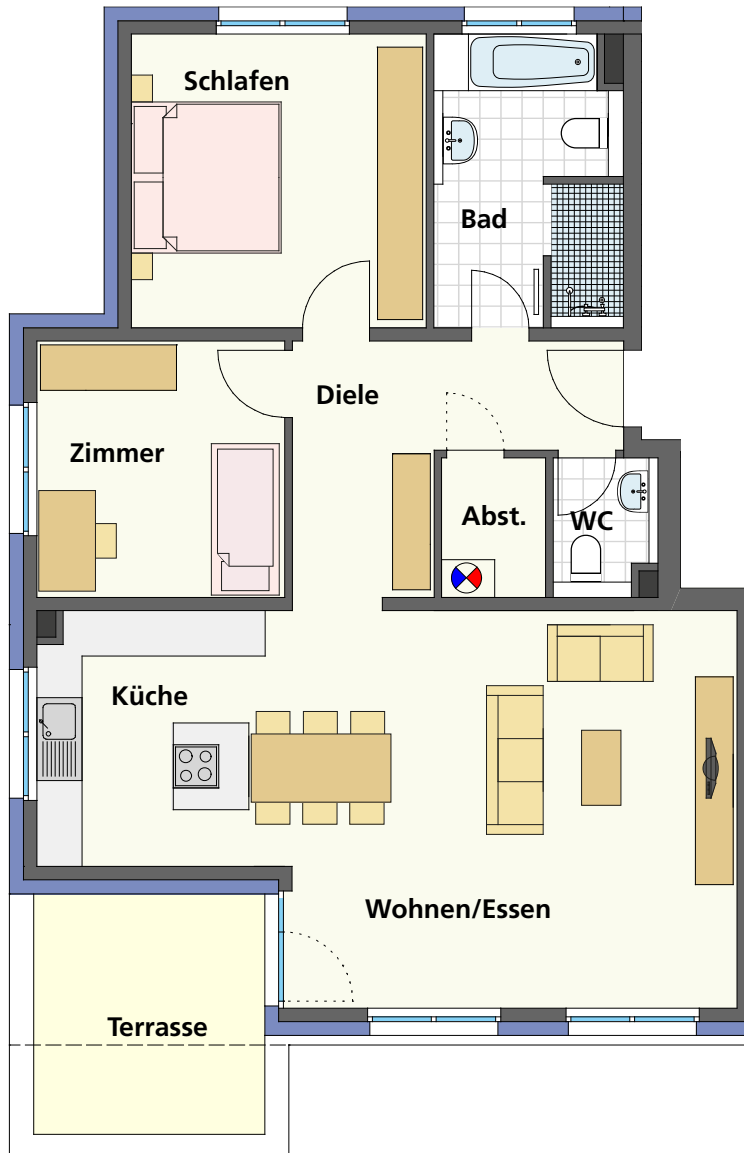


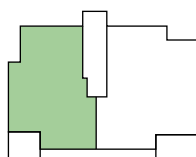
Maßstab 1:100

— = 1m

— = 2m



Haus Lincoln



Haus Truman

**Haus B Truman,
3-Zimmer-Wohnung
Nr. 7, DG**

Wohnen/Essen	30,47 m ²
Küche	11,11 m ²
Schlafen	14,92 m ²
Bad	8,64 m ²
Zimmer	10,95 m ²

WC	1,99 m ²
Diele	10,04 m ²
Abstellraum	2,50 m ²
Terrasse (9,72 m ² /2)	4,86 m ²

Gesamtwohnfläche 95,48 m²