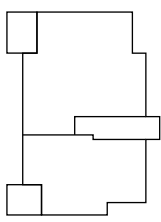
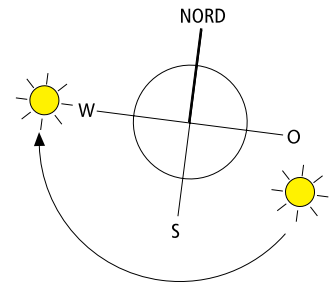
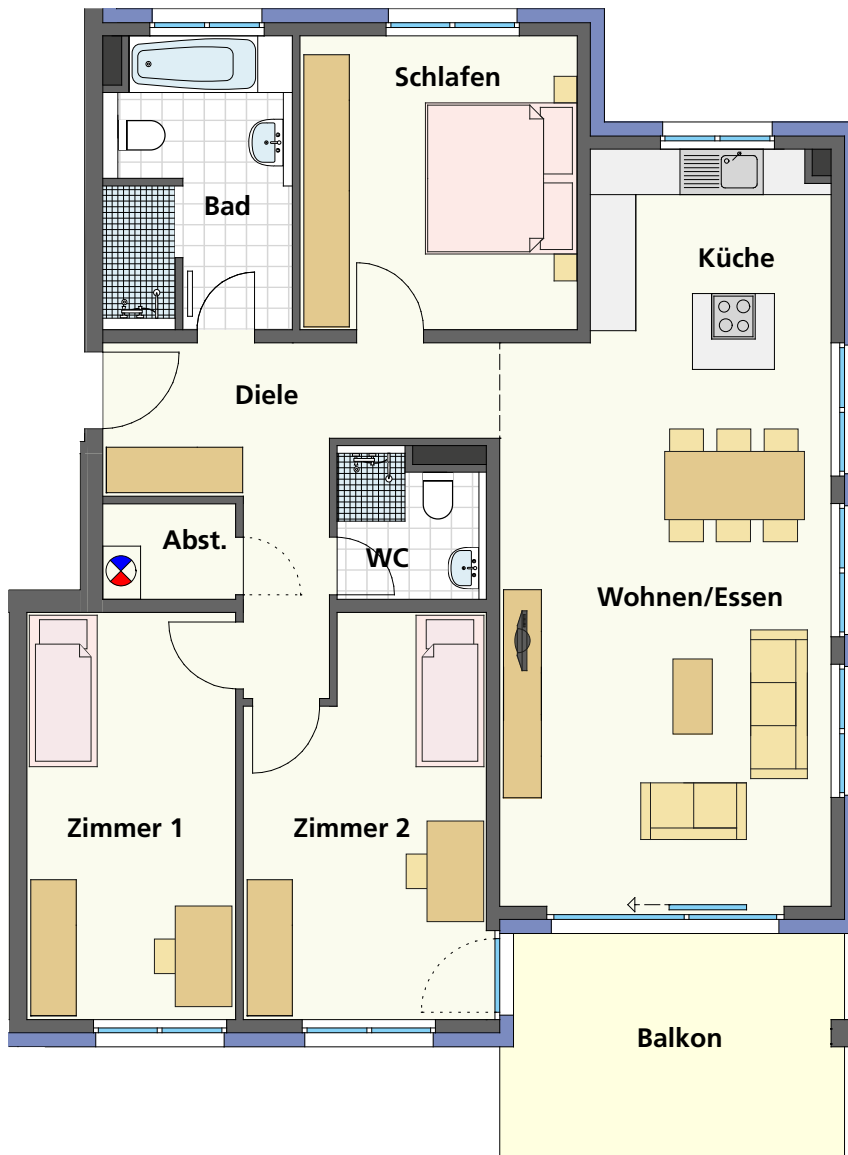


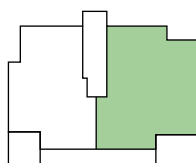
Maßstab 1:100

— = 1m

— = 2m



Haus Lincoln



Haus Truman

**Haus B Truman,  
4-Zimmer-Wohnung  
Nr. 4 und 6, OG**

Wohnen/Essen	32,18 m <sup>2</sup>
Küche	7,88 m <sup>2</sup>
Schlafen	14,03 m <sup>2</sup>
Bad	8,64 m <sup>2</sup>
Zimmer 1	14,64 m <sup>2</sup>

Zimmer 2	15,54 m <sup>2</sup>
DU/WC	3,33 m <sup>2</sup>
Diele	11,80 m <sup>2</sup>
Abstellraum	2,19 m <sup>2</sup>
Balkon (13,34 m <sup>2</sup> /2)	6,67 m <sup>2</sup>

**Gesamtwohnfläche 116,90 m<sup>2</sup>**