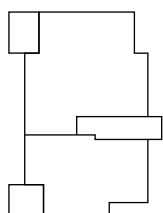
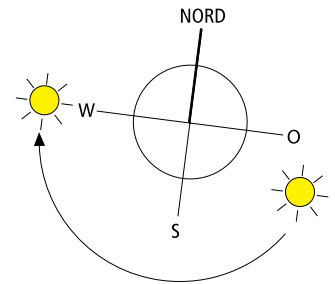


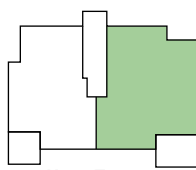
Maßstab 1:100

— = 1m

— = 2m



Haus Lincoln



Haus Truman

**Haus B Truman,
4-Zimmer-Wohnung
Nr. 2, EG**

| | |
|--------------|----------------------|
| Wohnen/Essen | 32,18 m ² |
| Küche | 7,88 m ² |
| Schlafen | 14,03 m ² |
| Bad | 8,64 m ² |
| Zimmer 1 | 14,64 m ² |

| | |
|------------------------------------|----------------------|
| Zimmer 2 | 15,54 m ² |
| DU/WC | 3,33 m ² |
| Diele | 11,80 m ² |
| Abstellraum | 2,19 m ² |
| Terrasse (13,34 m ² /2) | 6,67 m ² |

Gesamtwohnfläche 116,90 m²
Wohngarten ca. 64 m²