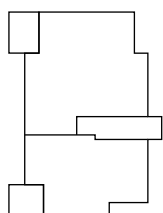
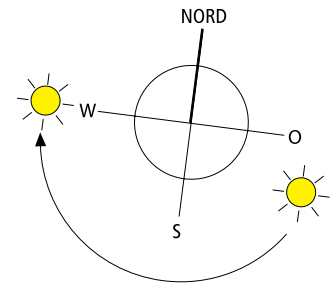


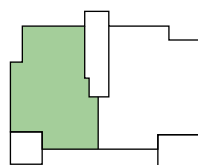
Maßstab 1:100

— = 1m

— = 2m



Haus Lincoln



Haus Truman

**Haus B Truman,
3-Zimmer-Wohnung
Nr. 1, EG**

Wohnen/Essen	31,21 m ²
Küche	11,10 m ²
Schlafen	14,92 m ²
Bad	8,63 m ²
Zimmer	10,95 m ²

WC	1,99 m ²
Diele	10,04 m ²
Abstellraum	2,50 m ²
Terrasse (11,38 m ² /2)	5,69 m ²

Gesamtwohnfläche 97,03 m²
Wohngarten ca. 120 m²